



Cwm Taf Morgannwg
Bwrdd Diogelu
Safeguarding Board



Annual Report

2022/2023



Bwrdd Iechyd Prifysgol
Cwm Taf Morgannwg
University Health Board



BAVO

Gwasanaeth
Prawf
Probation
Service



InterLink
Rhondda Cynon Taf



VOLUNTARY ACTION
MERTHYR TYDFIL
GWEITHREDU GWIRFODDOL
MERTHYR TYDFIL

Contents

1. Introduction and Foreword - Chair of the Board	P3
2. Safeguarding in Cwm Taf Morgannwg	P4
3. Members of the Safeguarding Board	P7
4. What did the Board do in 2022-2023 to meet its outcomes?	P8
5. How did we implement our Annual Plan and what were our key achievements?	P12
6. Safeguarding Themes	P19
7. Information, Training and Learning	P22
8. How have we collaborated with others?	P25
9. Participation and Involving	P27
10. Contributions of Board Members	P30
11. Managing our Resources	P33
12. Other Board Activities	P34
Appendix 1 Board Membership	P37
Glossary	P40

Introduction and Foreword - Chair of the Regional Safeguarding Board

Welcome to the 2022-2023 Cwm Taf Morgannwg Safeguarding Board Annual Report.

The Cwm Taf Morgannwg Safeguarding Board is a statutory partnership made up of the agencies that are responsible for safeguarding children and adults at risk in Bridgend, Merthyr Tydfil and Rhondda Cynon Taf.

In March 2022, the Board published a [Plan](#) setting out its priorities for the coming year. There was a strong focus this year on developing our strategic approach to exploitation, both in relation to children and adults at risk. Partner agencies have worked together to develop our governance arrangements and agreeing appropriate tools to support with the identification and assessment of all forms of exploitation. This will continue into 2023-2024.

The impact of the pandemic and the cost of living crisis continues to affect services and the community. The Board has recognised that early intervention and preventative services are crucial in meeting the needs of the people we support and to address the increasing demands on statutory services.

We have faced challenges along the way. The publication of the Child Practice Review in relation to Child T has shone a spotlight on some aspects of safeguarding that needed to be improved. We have fully accepted the recommendations from this review and have taken actions to address these, on a local, regional and national basis. We must ensure that we do our utmost to prevent tragic cases like this happening in the future and we want to provide assurances to Child T's family that we will do everything we can to make sure that this is the case.

Finally, I would like to thank the staff who work tirelessly across the region to protect our most vulnerable people. Their wellbeing remains a priority for the Board and we continue to seek assurances from partner agencies that this is addressed.

If anyone is interested in finding out more about the Cwm Taf Morgannwg Safeguarding Board, or if you'd like to get involved in informing our priorities, please contact our Business Unit by e-mailing: ctmsafeguarding@rctcbc.gov.uk



Lisa Curtis-Jones
Chair of the Cwm Taf Morgannwg Safeguarding Board

1. Safeguarding in Cwm Taf Morgannwg

The region of Cwm Taf Morgannwg covers the local authority areas of Bridgend, Merthyr Tydfil and Rhondda Cynon Taf with a combined population of approximately 428,000¹

The **Cwm Taf Morgannwg Safeguarding Board** is a statutory partnership made up of the agencies that are responsible for safeguarding children and adults at risk in Cwm Taf Morgannwg. The aim of the Board is to ensure that people of all ages are protected from abuse, neglect or other kinds of harm. This also involves preventing abuse, neglect or other kinds of harm from happening.

The two key **safeguarding** objectives of **protection** and **prevention** underpin the work of the Board and inform the priorities each year.

The responsibilities and functions of the Board are set out in the statutory guidance under Part 7 of the Social Services and Wellbeing (Wales) Act 2014. It has an overall responsibility for challenging relevant agencies so that:

- There are effective measures in place to protect children and adults at risk who are experiencing harm or who may be at risk as the result of abuse, neglect or other kinds of harm; and
- There is effective inter-agency co-operation in planning and delivering protection services and in sharing information.

Safeguarding Children

Section 130 (4) of the Social Services and Wellbeing (Wales) Act 2014 defines a child at risk as a child who:

Is experiencing or is at risk of abuse, neglect or other kinds of harm;

- a) Has needs for care and support (whether or not the authority is meeting any of those needs).



What do we mean by Harm?

Harm is defined as:

- ill treatment - this includes sexual abuse, neglect, emotional abuse and psychological abuse
- the impairment of physical or mental health (including that suffered from seeing or hearing another person suffer ill treatment).
- the impairment of physical, intellectual, emotional, social or behavioural development (including that suffered from seeing or hearing another person suffer ill treatment).

¹ Source: Office for National Statistics (Census 2021)

Types of Harm

The following is a non-exhaustive list of examples for each of the categories of harm, abuse and neglect included in vol 5 Working Together to Safeguard People: Volume 5 – Handling Individual Cases to Protect Children at Risk:

- **physical abuse** - hitting, slapping, over or misuse of medication, undue restraint, or inappropriate sanctions;
- **emotional/psychological abuse** - threats of harm or abandonment, coercive control, humiliation, verbal or racial abuse, isolation or withdrawal from services or supportive networks, witnessing abuse of others
- **sexual abuse** - forcing or enticing a child or young person to take part in sexual activities, whether or not the child is aware of what is happening, including: physical contact, including penetrative or non-penetrative acts; non-contact activities, such as involving children in looking at, or in the production of, pornographic material or watching sexual activities or encouraging children to behave in sexually inappropriate ways;
- **financial abuse** - this category will be less prevalent for a child but indicators could be:
 - not meeting their needs for care and support which are provided through direct payments; or
 - complaints that personal property is missing.
- **neglect** - failure to meet basic physical, emotional or psychological needs which is likely to result in impairment of health or development.

Safeguarding Adults

S126(1) of the Social Services and Well-being (Wales) Act 2014 defines an adult at risk as an adult who:

- a) is experiencing or is at risk of abuse or neglect,
- b) has needs for care and support (whether or not the authority is meeting any of those needs), and
- c) as a result of those needs is unable to protect himself or herself against abuse or neglect or the risk of it.



Abuse can be physical, sexual, psychological, emotional or financial (includes theft, fraud, pressure about money, misuse of money) and can take place in any setting, whether in a private dwelling, an institution or any other place.

Neglect describes a failure to meet a person's basic needs physical, emotional, social or psychological needs, which is likely to result in an impairment of the person's well-being (for example, an impairment of the person's health). It can take place in a range of settings, such as a private dwelling, residential or day care provision.

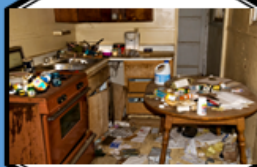


Case Example: Adult Services Multiagency work

1. Background

Miss X lives alone following the death of her parents a number of years earlier. Miss X was referred to the Social Services, Community Health and Wellbeing team by a neighbour expressing concerns in relation to her safety and general welfare because she had been found lying on the floor in the middle of the road and appeared to be dishevelled, and confused.

The social worker visited Miss X at her home address and during the visit, it was evident that she had been neglecting her personal hygiene for some time. Her home appeared unclean, cluttered and cold. There was no hot water or heating at the property. There was also extensive unopened mail on the floor.



2. What did we do?

The social worker called the GP as she was so concerned about Miss X's presentation. Not only was she unkempt and cold but she was also very confused and was having delusions.

The GP arranged for Miss X to be admitted to hospital where she was treated for a number of physical ailments and diagnosed with vascular dementia.



3. How we worked co-productively with Miss X

As Miss X's condition began to improve she told the social worker she had cared for both her mother and father before they passed away and had neglected her own social and physical health needs as a result. She had no extended family or friends to support her. Before becoming unwell Miss X was very active and wanted to be so again.

4. What happened next?

The social worker asked Miss X to visit the care home to have a look around as Miss X had a very traditional view about life in a care home.

Following the visit Miss X changed her mind and it was agreed that she would move into the care home following another visit.

Miss X moved into the care home but was not settling well and was having aggressive outbursts towards staff. This is not uncommon in people who have vascular dementia.

The social worker referred Miss X to the Specialist Dementia Intervention Team who provided advice and guidance for staff about how to manage the periods of distress Miss X was experiencing.

The social worker referred Miss X to an Independent Mental Health Advocate who would support Miss X to share her views, wishes and feelings about her care and support.

Regular multiagency meetings were held to consider Miss X's care and support needs. Professionals involved with Miss X from Health and Social Care felt that Miss X's needs would be better met in a residential setting. However, initially Miss X disagreed and wanted to return home.

Miss X was encouraged to share her views about where she wanted to live, however, this was not felt to be a safe option for Miss X from the perspective of professionals.



Outcome

Miss X has now settled well in the care home, making friends and taking part in activities that she likes. She goes out shopping. Her sleep pattern is better and she has gained weight. This example shows that despite the Local Authority's desire to support people to live in their own homes, living in a care home can be a positive alternative when it is not safe to do so and can still promote people's independence and support them to have fulfilled lives. This is also a good example of multiple teams working together to achieve the best outcome for Miss X.

Multi Agency Safeguarding Hubs

In the Cwm Taf Morgannwg region there are two Multi Agency Safeguarding Hubs (MASH) that report to the Board:

The Cwm Taf (Merthyr Tydfil and Rhondda Cynon Taf) Multi Agency Safeguarding Hub (MASH) and the Bridgend Multi Agency Safeguarding Hub (MASH).

The purpose of the MASH is to act as the single point of contact for all professionals to report safeguarding concerns. MASH provides the opportunity for a higher standard of safeguarding by providing all professionals with more information on which to make better, more informed, and more timely decisions. This enables the effective sharing of information between agencies, helping to protect children and adults from abuse and neglect.

Although the concept of the MASH involves co-location, partner agencies have responded to the different ways of working over the past three years, including remote working, without compromising the need for prompt information sharing and actions to safeguard people. The MASH are developing hybrid models, utilising new communication / information sharing technologies that support both in-person and remote working.

The collaboration of both Multi Agency Safeguarding Hubs continues to be a key focus of the Board to streamline multi-agency safeguarding across the Cwm Taf Morgannwg region. Recent collaborative projects include:

- A multi-agency working group established to agree a consistent approach and shared understanding of child protection threshold decision making across the three local authority areas in CTM;
- Ongoing work to establish clear pathways for signposting and referrals for professionals (for both Children and Adults);
- Merging the Cwm Taf and Bridgend MASH Quality Assurance and Performance Groups in August 2022, with a joint Terms of Reference agreed, a combined audit programme, and joint work plan; and a new performance framework in development.
- A multi-agency working group set up to identify a replacement MASH information sharing system that is fit for purpose for both Cwm Taf and Bridgend, to be implemented in Summer 2023 across both MASH.

2. Members of the Safeguarding Board

The Lead Partner for the Board is Rhondda Cynon Taf County Borough Council and the membership complies with the statutory guidance issued under Part 7 of the Social Services and Well Being Act 2014.

The lead partner hosts the Board's Business Unit and holds the Board budget on behalf of the statutory partner agencies.

A list of Board members is attached as Appendix 1.

3. What did the Board do in 2022-2023 to meet its Outcomes?

Governance

The Safeguarding Board has a robust governance structure in place (Appendix 2) that enables it to carry out its functions and achieve positive outcomes for children and adults at risk in Cwm Taf Morgannwg.

Challenge and Scrutiny

The Board holds partner agencies to account in relation to their safeguarding activities through effective monitoring and challenge. This is carried out via the Board and Sub Group meetings, reviews, inspection reports and audit activity.

The Board encourages partner agencies to share individual inspections and reviews that relate to safeguarding. In 2022-2023, the Board received and reviewed the following reports and improvement plans from agencies:

- Improvement Action Plan from Health in relation to children's mental health provision
- A report from Education colleagues in response to an Estyn report on peer on peer sexual harassment
- Youth Custody Service Safeguarding Forum
- Winter Pressures and Hospital Discharge Pressures
- Parc Prison HMI Inspection Report
- Care Inspectorate Wales performance evaluation inspection in Bridgend
- NHS Wales Safeguarding Network Annual Plan

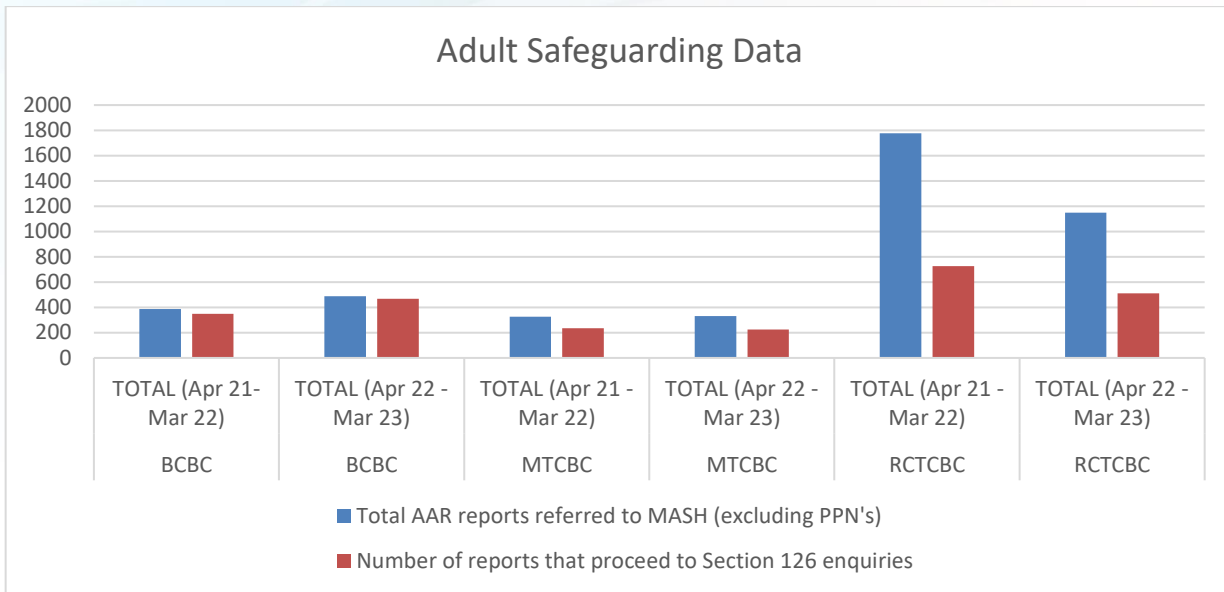
Performance

The Board has a performance framework in place to capture safeguarding data. This has been subject to further development this year, to ensure that we have a consistent, regional, multi-agency framework.

Adult Safeguarding

Overall, there has been an increase in the number of reports received by Bridgend, a slight decrease in Merthyr and an apparent significant decrease for RCT in 2022-2023 compared with 2021-2022. However, RCT changed its recording practice in 2022-2023 to align better with Bridgend and Merthyr. In fact, the total number of contacts received by RCT's Safeguarding Team increased by 400.

The percentage of Reports proceeding to S126 enquiries continued to differ markedly between the three local authorities. The overall percentage for 2022-2023 for Bridgend was nearly 96%, whilst it was 68% for Merthyr and 45% for RCT. There appears to be a real difference in initial decision-making across the three local authorities that will need some comparative audit work in 2023-24.



Escalating Concerns

Reports from Local Authority Commissioning Departments were received each quarter in relation to service providers in escalating concerns. On average, just over 4 Providers were discussed each quarter across the region.

Case Study

A 93-year-old lady was admitted to an RCT care home from a Gwent hospital. She was admitted with pressure sores, which were reported by the Home to the relevant Local Authority Safeguarding Team. Subsequent to this, a further Safeguarding Report was received by RCT Safeguarding Team as instructed by the Tissue Viability Nurse because there were concerns about whether the Home had produced a robust treatment plan to prevent further damage to her skin and whether there had been further damage since her admission there. Initially, there were various cross-boundary issues to overcome, but the 2 Safeguarding Co-ordinators worked together to ensure that there was a robust investigation within the Health Board that could inform the investigation into the care home's practice. The RCT Safeguarding Co-ordinator commented that 'there was good multi-agency involvement by Aneurin Bevan UHB, Caerphilly Adult Safeguarding Team, the CTMUHB Tissue Viability Nurse, the Care Home Manager, Police, CIW and the GP'.

Deprivation of Liberty Safeguards (DoLS)

In RCT and Merthyr, the number of DoLS assessments increased significantly this year because of a decision by both Authorities to out-source less complex assessments. As a result, the waiting list at the end of the year was the lowest number since 2014.

In Bridgend, the number of assessments decreased compared with the two previous years and the Health Board increased the number of assessments completed. with increased Best Interests Assessor capacity.

There is currently a waiting list of 144 assessments, to resolve this Bridgend has employed a number of agency Best Interest Assessors and Section 12 Doctors to support the completion of these assessments.

Good Practice

In preparation for the Liberty Protection Safeguards (prior to the announcement by the UK Government that implementation would be further delayed, the Health Board recruited a Mental Capacity Practice Facilitator. This role has facilitated significant awareness raising and training for all health staff with regards to mental capacity within clinical practice. The positive repercussions of this have been reflected in the quality of referrals and assessments within the DoLS and MCA team.

Children's Safeguarding

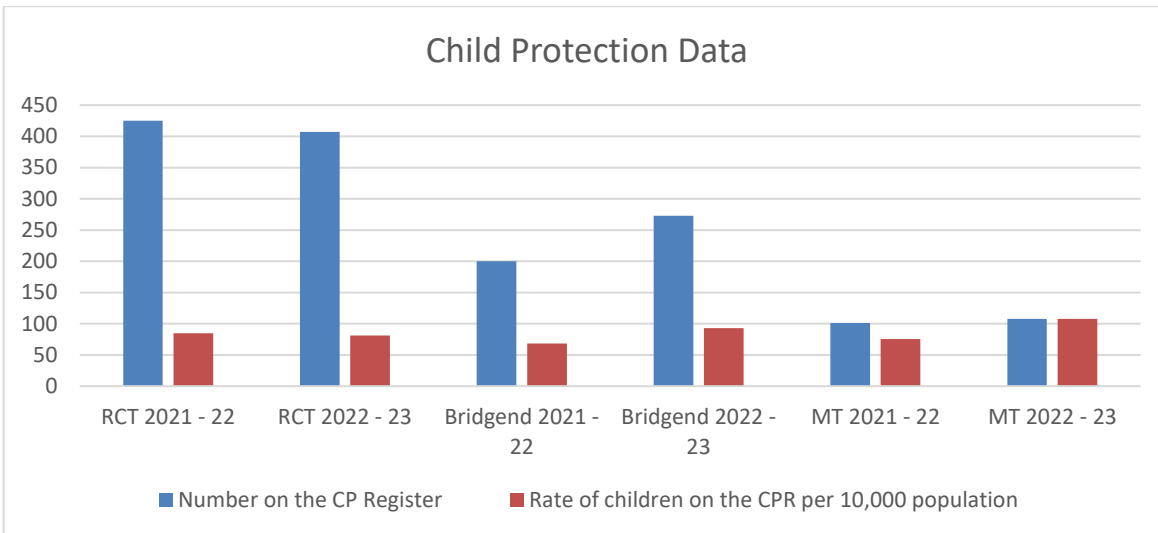
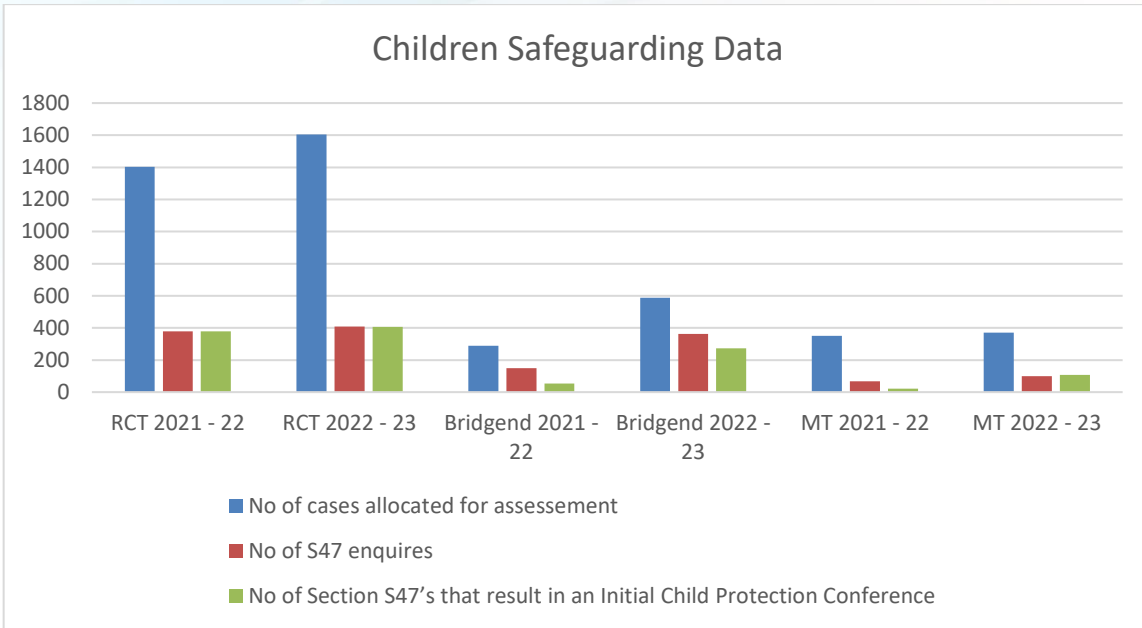
In 2022-2023, there was an increase in demand at the 'front door' across the region.

In RCT there was a large increase in contacts made and cases allocated for assessment compared to the previous year. This evidences a continued increase in demand at the 'front door'. Despite this, cases meeting the threshold to proceed to child protection enquiries and initial conferences remained fairly stable.

Bridgend has seen a significant increase in demand in child protection assessments, enquiries and cases proceeding to an initial conference. This is reflective of the increased professional and public awareness following the publication of the Child T Child Practice Review alongside challenges following the pandemic and cost of living crisis.

In Merthyr Tydfil, figures have remained fairly stable, with more referrals have been sent to early help which has been the desired outcome.

With regards the number of children on the Child Protection Register, again this has increased across the region. This will continue to be monitored closely.



Professional Disagreements

The Board's [Concerns Regarding Interagency Safeguarding Practice \(CRISP\) protocol](#) supports practitioners in finding a resolution when they have a professional disagreement or concern in relation to another agency's safeguarding practice.

In 2022-2023, there were 8 cases escalated to the Board for resolution. All of these were RCT cases. Further work will be carried out in 2023-2024 to ensure that the process is consistent across the region.

4. How did we implement our Annual Plan and what were our key achievements?

The Board published an Annual Plan on the 31st March 2022, setting out its priorities for safeguarding children, young people and adults at risk in 2022/2023.

The Annual Plan for 2022/2023 can be accessed at: www.ctmsb.co.uk

In relation to the Board's Strategic Priorities, a summary of the work carried out is below.

Strategic Priority 1: Keeping our Communities Safe by Working Together

The focus on Exploitation has continued through a regional multi-agency governance structure which has developed draft Practice, Screening and Assessment toolkits and a Strategy for child exploitation.

The Cwm Taf and Bridgend multi-agency exploitation groups joined to become a regional group and this approach will continue to be embedded into the Board structure, along with an exploitation dashboard to monitor activity.

The Board, through RCT Children Services, has undertaken consultation with young people from Pontypridd High School who not only contributed to the strategy, but also participated in National Safeguarding Week in November 2022, presenting some of the key work they have undertaken in their pursuit to create a safer community. In Merthyr, a youth/student conference was held on exploitation and there was good engagement from a wide range of schools. In Bridgend, two specialist exploitation senior social worker posts were created within Childrens Social Care and continued engagement of an experienced interim group manager with an expertise in exploitation to embed new ways of working. Bridgend has successfully introduced an Exploitation Screening document and this informs which cases are discussed at the monthly Exploitation Panel. The panel implementation is in the early stages but feedback has been very positive in how it supports collaborative working and supports a coordinated response to exploitation.

Cwm Taf Youth Offending Service delivered a workshop in primary schools in RCT to educate them to stay clear from behaviours in the community that could bring them to the attention of the Community Safety Partnership and to enable them to stay safe.

We continue to work in partnership to support with this work. For example, Anti-Social Behaviour leads have been invited to attend the Board's Children Quality Assurance and Performance Sub Group so that we are able to triangulate some of the work of the Community Safety Partnership and the Safeguarding Board in ensuring interventions are effective safeguarding children, their families, and the community. A multi-agency approach has been adopted across partner agencies to scope the extent of exploitation, consider any immediate protective action and prevent harm through common understanding. Using a contextual safeguarding approach (this is an approach that considers risk in the context in which it occurs i.e. outside of the family home), we have been able to identify some key locations and swift action has been taken to disrupt some of the locations that presented a high risk to children.

Strategic Priority 2: A Renewed Focus on Prevention and Early Intervention

The COVID pandemic and the cost of living crisis has been continuing to have an impact on our services and the needs of our community. In 2022-2023, we wanted to ensure that there was robust early intervention and prevention services to support children, young people and adults, to prevent them from becoming at risk of abuse or neglect.

To support this, we aimed to raise awareness of preventative services across all partner agencies and by attending events to share information with the public.

In RCT, Adult Services worked with South Wales Police to develop an 'Early Help' option to which police officers can refer when on calls to vulnerable people in our communities. The project has demonstrated real added value since it commenced as a pilot in September 2022. It is now established as an ongoing service option.

RCT Children Services has also brought together its early help services alongside the Enquiry and Assessment teams. This facilitates closer working relationships across early help and assessment services and supports safe arrangements for families when needs require cases to either step up or step down. During 2022 the Resilient Families Service underwent a post pandemic review and renewed the focus and working arrangements across its various teams. It continues to support increasing numbers of families to build resilience and better manage the day-to-day challenges that they face. 98% of families who complete the intervention and have provided feedback report increased resilience.

Bridgend early help services continue to offer a locality based model of provision with a range of co-located family intervention workers. Team around the family interventions closing with a positive outcome was reported at 73% in 2022-2023, despite a clear increase in the complexity of cases this service is working with.

Parc Prison set up an Interdepartmental Risk Management Meeting and Release Planning Board. This ensures that through the gate planning between the prison and external agencies is completed and robust to manage the risk posed. This has recognised good practice by the probation Senior Leads in other Welsh Prisons.

WAST developed and implemented a Fire Service Referral pathway during the pandemic to enable staff to identify individuals and/or residences who or which would benefit from an assessment from the South Wales Fire & Rescue Service Home Safety Team. An electronic safeguarding reporting system enabled them to strengthen the referral pathway between WAST and the Live Fear Free organisation. During this reporting period, WAST submitted 110 child at risk reports and 182 adult at risk reports. In terms of supporting prevention and early intervention, WAST staff have submitted 114 needs for care and support reports for children and 478 needs for care and support reports for adults during this reporting period.

The Health Board has introduced collaborative working with other health services to produce policies and guidance that will enhance early intervention and prevention strategies.

South Wales Police has developed an Early Help Referral pathway to ensure that children, young people, adults, and families 'in need', who do not meet the statutory safeguarding threshold, get the right help as early as possible, via social care support or intervention. This new initiative means that they can work collectively with partners to put in place sustainable solutions to people experiencing difficulties or crises to prevent them from escalating into safeguarding concerns.

Good Practice

This year, the Wales Ambulance Services Trust (WAST) has further developed the capability of the electronic safeguarding reporting system through collaborative work with WAST's Dementia Lead and the Alzheimers organization. A new pathway will be implemented which will allow WAST staff to refer individuals, families and caregivers directly to a specialist organisation that can support them where there are concerns of dementia/Alzheimers diagnosis.

Strategic Priority 3: Moving Beyond the Pandemic – Recovery and Reflection

The Board continues to seek opportunities to become a more streamlined, effective, evolving, and challenging to enable us to prepare and respond promptly to risks, issues and opportunities to improve.

This year we have:

- Reviewed the structure, Terms of Reference, membership, purpose, role profiles and remit of the Board and all of its Sub-Groups, in line with the statutory guidance
- Established/strengthened our escalation processes and how we challenge each other constructively
- Reviewed and improved our existing and performance frameworks
- Reviewed the current MASH arrangements and processes and agreed key performance information that needs to be reported to the Board
- Implemented a new Regional Learning Framework
- Trained more people to become independent Panel Chairs and Reviewers
- Set up a Task and Finish Group to oversee the implementation of the Single Unified Safeguarding Review (SUSR) process and manage the impact on the Board

Our partner agencies have supported with this priority. The effectiveness of remote working in terms of inclusivity and time-efficiency have been recognised and retained post-Covid for many of our services. Some agencies have transitioned fully out of the operating models that were used during the pandemic. In addition the lessons identified during the pandemic in relation to safeguarding have been embedded to allow for a much more effective safeguarding response in the event of any future pandemics requiring similar workplace restrictions.

The introduction of a new Single Unified Safeguarding Review (SUSR) process later in 2023 will strengthen the review landscape within Wales by creating a single review process which incorporates a multi-agency approach where the criteria for one or more of the following

reviews is met: Adult Practice Review; Child Practice Review; Domestic Homicide Review; Mental Health Homicide Review and Offensive Weapons Homicide Review. This will eliminate the need for families to take part in an onerous and traumatising cycle of information-giving and waiting. The Board will have responsibility for this process and has been actively involved in its development through various meetings and groups facilitated by Welsh Government. This will continue into the coming year.

Other Board Priorities

Staff Wellbeing

Staff wellbeing has remained a priority across all agencies, with an increased number of health and wellbeing support services and groups being available.

Six-monthly reports have been presented to the Board's Joint Operational Committee to demonstrate every agencies commitment to supporting staff wellbeing. Initiatives have included:

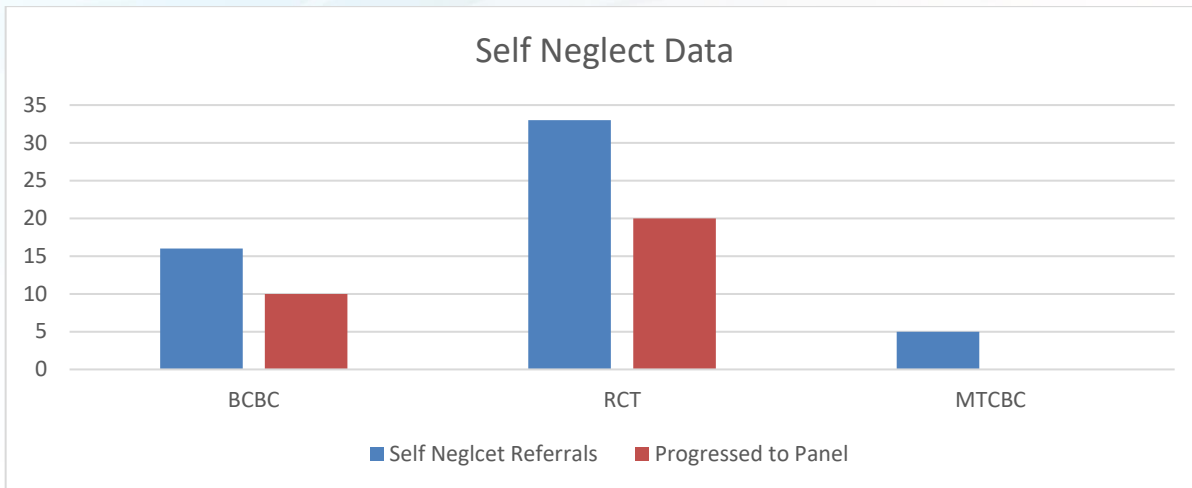
- Managing caseloads
- Counselling support
- Wellbeing apps and webpages
- Employee Assistance programmes
- Staff briefings and development sessions
- Staff supervision
- Wellbeing strategies

Self Neglect

The Board introduced it's regional approach to managing cases of self neglect in adults in October 2021. This has proved to be an effective mechanism in making a real difference to people experiencing severe self-neglect.

The Self-Neglect Partnership Panels are well-established, particularly in RCT and this is beginning to become embedded in the other local authority areas.

Across the Region, 49 referrals were made to the Self-Neglect panels in 2022-2023, and outcomes demonstrate that it is making a real difference to the people referred and to the professionals supporting them.



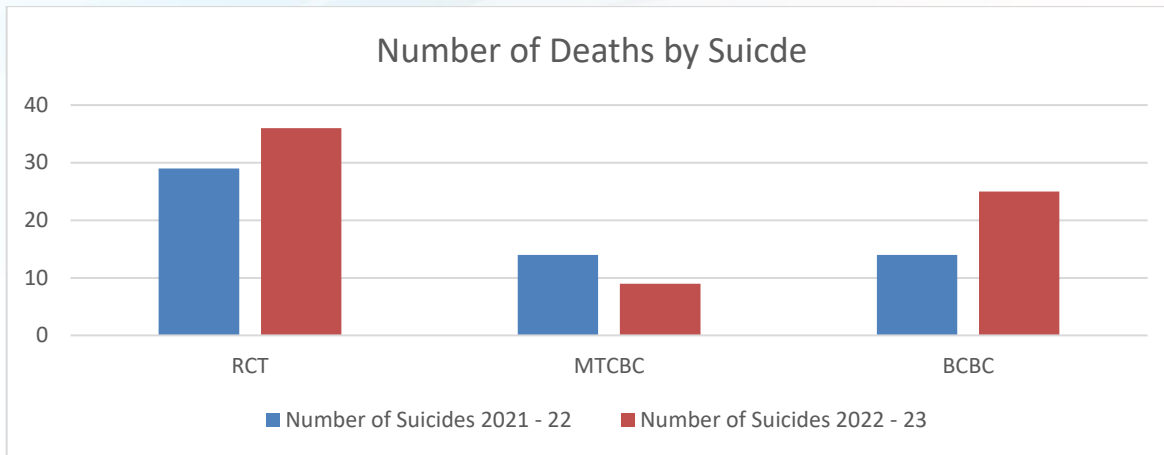
Case Study

Sarah, aged 48, lives alone in a housing association adapted flat and has no informal support networks. She has osteoarthritis and has mobility problems: she uses a mobility scooter to access the community. She presented to her GP surgery with severely infected flea bites. Sarah's flat was infested with fleas from her 5 cats. She was prescribed antibiotics and attended her GP surgery for frequent dressing changes by the practice nurse. There was an attempt by the Housing Association to fumigate the flat but there was so much clutter that it was only partially effective. She was offered refuge at the local Community Hub whilst the fumigation took place. She was struggling with managing her personal care, but no agencies would enter the property whilst the infestation continued. With support from her Housing Support worker, Sarah managed to dispose of the worst of the clutter in her flat so the next fumigation was successful. Discussion at Panel resulted in a social worker being allocated to complete a well-being assessment with Sarah in person and with the support of her housing support worker, rather than a proportionate assessment over the phone. This resulted in Sarah having a reablement package from Adult Services that focused on enabling her to recover her independence.

Suicide Prevention

The Board continues to work on a regional, cross-partnership basis to support the prevention of suicide and self-harm agenda. A multi-agency Suicide Review Group receives information held by the Board in respect of suspected completed suicides managed under the Immediate Response Protocol, which allows us to identify themes, demographics and triggers that can support us in tackling this very important agenda.

Although the rate of suspected suicides has increased in RCT and Bridgend this year compared to 2021-2022, the Board and its partners continue to develop a strategic, preventative response. This will include the identification of significant 'near misses' so that interventions can be put in place at an earlier stage.



In Bridgend, a Cluster Responsive Review was set up, following a number of completed suicides across Bridgend. This was facilitated by the Welsh Government’s regional suicide and self-harm lead.

Protocols and Procedures

The following Board protocols and guidance documents were reviewed and updated during 2022-2023:

- [Child Protection Conference Protocol for Practitioners](#)
- [Child Protection Register Enquiry Protocol](#)
- [Core Group Resolution Process](#)
- [Disclosure of Childhood Abuse by a Person who is now an Adult: Guidance for Practitioners](#)
- [Multi Agency Chronology Guidance](#)
- [Protocol for the Immediate Response to Critical Incidents](#)
- [Working with People who are Resistant to Engaging in the Safeguarding Process](#)

Partner Agency Achievements

In addition to the joint work that is undertaken as a multi-agency Board, individual partner agencies also share their achievements in relation to safeguarding.

South Wales Police has made a significant investment in delivering a programme of training called “Domestic Abuse Matters” to all of its frontline staff and officers. The Crown Prosecution Service also participated in the delivery of the training. This will be further rolled out to Police enabling functions who may not directly encounter victims of domestic abuse, such as firearms licensing officers, to give them the tools to effectively identify domestic abuse and how to tackle it.

Bridgend Council Adult Services has developed an escalation response to ensure critical care and support services for adults are prioritised, where the Health Board has declared

Business Continuity Emergency status. Bridgend Adult Services supported the regional response to the UK and Welsh Government's consultation on changes to the Mental Capacity Act and secondary legislation in preparation for the implementation of the Liberty Safeguards.

Bridgend Council Children's Services has developed Team champions have been introduced in the areas of supporting people from Ukraine, Domestic Violence and Mental Health. The introduction of Peer Supervision in provides a supportive peer forum for practitioners to reflect and gain advice from their peers. This has been well received and has been rolled out across Children's Social Care Safeguarding Teams. Finally, a new Quality Assurance & Learning Framework has been implemented. Our Joint Operational Group is held on a fortnightly basis and has proved valuable in resolving challenges between partner agencies and strengthening multiagency working.

Rhondda Cynon Taf Adults Services has led work to implement new Safeguarding Procedures documentation across the Region. RCT also led on developing a regional response to the UK and Welsh Government's consultation on changes to the Mental Capacity Act and secondary legislation in preparation for the implementation of the Liberty Safeguards (now further delayed).

Merthyr Education has introduced a database in order to scrutinise the information provided by schools within Merthyr Tydfil from the annual safeguarding audit. This has allowed them to identify areas of concern quickly and support the identified school to put plans in place to reduce the risk and address the concern.

Wales Ambulance Services Trust has recruited three Safeguarding Specialists into the Safeguarding Team to improve visibility at a local level.

Parc Prison has developed an Interdepartmental Risk Management Meeting and Release Planning Board. This ensures that through the gate planning between prison and external agencies is completed and robust to manage the risk posed. This has recognised as good practice by the probation Senior Leads in other Welsh Prisons.

Bridgend Education use safeguarding audits as a key tool that assists schools in responding to the changes in the inspection framework and protecting children from harm. All schools in Bridgend (60) completed their audits and shared these with the local authority. In comparison to last year, there was an improvement in the overall rating with a slight increase in those rated green (increase of 2) and no schools rated red (1 last year). Ongoing work with schools will explore how they can demonstrate the impact of their safeguarding work and embed this practice across the whole school site.

Cwm Taf Morgannwg University Health Board has appointed a Health Independent Domestic Violence Adviser which has promoted improved collaboration between health, statutory partners and third sector in the support for victims of domestic violence. Emergency Department safeguarding meetings have facilitated joined up learning, development of pathways and an emergency department safeguarding booklet. The Child Protection Medical HUB continues to provide a consistent, child centered approach for all children requiring a medical from three Local Authorities across Cwm Taf Morgannwg.

Rhondda Cynon Taf Children Services is continuing to improve edge of care support for families to safely prevent children from needing to become looked after. The service delivery

pathway will improve both the quality and timeliness of decisions that need to be made for those children most at risk. There has been an increasing rate of referrals to the Resilient Families Service, resulting in an increase in preventative work which is achieving a high rate of improved resilience within families. Quality assurance at the front door has continued to take place to ensure consistent decision making.

Merthyr Tydfil Children’s Services has undertaken quality assurance work that has provided evidence that the reduction in the number of children on the child protection register and children looked after has been achieved safely through careful management of risk. An overview of recent quality assurance work highlighting areas of strength and priority learning is leading to a plan for further improvement through input across all levels of the management team.

Merthyr Tydfil Adults Services appointed to a Senior Practitioner Post within Adult Safeguarding. This has increased resilience within the service and enabled development of processes and stronger regional consistency in this area. Cross regional quality assurance work shows positive adult safeguarding decision making judged by an objective regional partner. Adult safeguarding has strengthened its work to ensure the person is at the centre of the services and ensured closer work with our Health safeguarding partners in some areas despite the challenges of the pandemic.

5. Safeguarding Themes

Audit Activity

Achieving improvement in safeguarding policy, systems, and practice is a core function of the Board. Audit work is carried out via task and finish groups set up by the Quality and Performance Sub Groups. Any recommendations made by case audits are monitored by these groups to identify how practice is adapted to reflect any learning. The key learning themes from four completed audits are summarised below:

AUDIT ACTIVITY	THEMES IDENTIFIED
Non-Accidental Injuries in children under 5 (Bridgend)	<p>Not all decision making was informed by thorough consideration of the available information and the rationale was not always recorded with cases within certain times.</p> <p>Physical harm as a sole risk issue is usually managed well, but if the risk issues needing addressing are more diffuse and associated with parental neglect, complacency could be demonstrated.</p> <p>Better use of chronologies as a tool to aid practice and risk assessment needed.</p>



<p>De-Registrations at first review (RCT)</p>	<p>All, but one case, followed timescales. The average working day for completing a Section 47 enquiry is 17 working days, which is outside the guidelines of the Wales Safeguarding Procedures. When developing the Wales Safeguarding Procedures, there was a significant change made states that conference should be convened within 15 days from the initial strategy discussion, as opposed to the outcome strategy discussion which was the case previously. It was noted that quality is compromised by doing this due to timescales.</p>
<p>Review of strategy discussions that did not proceed to Section 47 (RCT, Merthyr and Bridgend)</p>	<p>Timeliness of strategy discussions from the point of Child Protection being identified and MASH being alerted. All cases were held within a 24-hour period.</p> <p>Children Services and Police achieved 100% attendance at strategy discussions.</p> <p>Generally good attendance at all the strategy discussions where there was a representative from other Local Authority social work teams where children from other Authorities were being discussed.</p> <p>Information stored against records was consistent and generally comprehensive to review.</p> <p>It is felt that all of the strategy discussions that were reviewed were appropriate to be discussed within that forum and therefore no concerns identified with the initial decision making to hold a strategy discussion despite threshold for Section 47 enquiries not being met.</p>
<p>Arrangements for risk assessment and escalation when repeat PPNs are received (RCT)</p>	<p>All cases were well-known to Social Care and only 2 were not allocated to a social worker during the audit timeframe and this was because the subject declined services pre or post-assessment.</p> <p>CMHTs were involved with 7 cases & Care & Support service with 3 cases.</p> <p>Reasons for police contact were principally for mental health incidents</p> <p>The Escalation Process was being utilised but still not consistently.</p> <p>Good screening and information-sharing by MASH with SW teams.</p> <p>Robust response to receipt of PPNs on most occasions.</p>

Adult Practice Reviews and Child Practice Reviews

In 2022-2023, the Board published 2 Child Practice Reviews and 2 Adult Practice Reviews:

[CPR CTMSB 04/2021](#)

[CPR CTMB 5/2020](#)

[APR 06/2020](#)

[APR 02/2021](#)

The learning from these Reviews were cascaded across all partner agencies and the action plans arising from the recommendations contained in these Reviews continue to be monitored. All partner agencies have demonstrated that they have shared the learning widely via a variety of different means. This includes 7-minute briefings, staff briefings, face-to-face workshops and via web updates. Partner agencies have also assured the Board that the learning has informed training.

All four reviews have acted as a reminder to all partner agencies on the importance of supervision and management oversight, the need for clear risk assessments, the challenges for professionals in recognising coercive control and disguised compliance and the importance of good record keeping, including the use of chronologies.

Some key actions have been undertaken in response to the learning, including:

- The adoption of a new Signs of Safety practice framework in Bridgend Children Services, which provides a strength-based, solution focused approach to safeguarding and child protection practice.
- The development of a new information sharing platform for both MASH, supported by Teams channels. This will improve the timeliness of strategy discussions and record agency interventions all in one place.
- Improvements to Quality Assurance and Learning Frameworks.
- Safe sleeping guidance and resources have been updated and re-circulated. A seven minute briefing, video and QR code leaflet has been developed and shared with partners.
- The delivery of additional training including domestic abuse and coercive control, professional curiosity and conferences and core groups.
- Anti-Social Behaviour guidance for staff has been reviewed and amended.
- Implementation of the Public Law Outline Reform
- The introduction of a repeat PPN escalation process

Complaints

The Board's [Complaints Procedure](#) provides families with the opportunity to make a complaint with regards to the multi-agency child protection conference process and procedures, and the multi-agency adult protection meetings process and procedures.

This year, there were 4 complaints received in relation to the child protection conference process. Of the 4 complaints received, the following outcomes were made by the Board's Independent Complaints Panel:

- 1 complaint was upheld
- 1 complaint was not upheld
- 2 complaints were partly upheld

The Board also dealt with one complaint regarding a professional concern which was partly upheld.

The learning from complaints is fed in to the Board's Quality Assurance and Performance Groups so that appropriate improvements can be made.

6. Information Training and Learning

Board partner agencies are required to review the training needs of practitioners in the area and the Board ensures that there is a co-ordinated approach to safeguarding training, taking into account themes and learning arising from the delivery of the Board's functions. This work is monitored by the Board's Training and Learning Sub Group.

Multi-Agency Safeguarding Training

The Local Authority Workforce Development teams (Cwm Taf and Bridgend) are the main source of reporting on safeguarding training, although all partner agencies ensure that adequate safeguarding training is delivered to staff.

On-line training has continued alongside face to face opportunities where it has been identified as being the best forum for learning.

Cwm Taf Social Care Workforce Development Service continued to deliver Safeguarding training during the course of 2022-2023. On-line learning training has continued to be delivered for a great part of the L3/Group C training offer, although the situation has remained challenging and courses were cancelled due to staffing issues.

There has been an increase in face to face delivery for certain groups of the workforce and these have again been impacted by staffing issues.

167 courses were planned and 15 courses were cancelled during this period, this was linked to continuing staffing pressures.

2653 people completed safeguarding training through the workforce development service. This was lower than expected as we did not reach maximum numbers on some courses.

The range of agencies accessing the training besides internal social care staff, included education, health, voluntary sector, foster carers and housing.

Wales Ambulance Services Trust has embedded safeguarding situations into clinical scenarios which are a component of the face-to-face mandatory in-service training (MIST) within WAST. The safeguarding themes included domestic abuse, adult at risk, professional curiosity and PRUDiC. The inclusion of safeguarding into these scenarios has been well received by staff with evaluations indicating that 99% of staff thought the inclusion useful and recommended that it should be continued for future MIST programmes.

In Bridgend, the mandatory safeguarding training programme 'Back to Basics – Strengthening Social Work Practice' is designed to create a solid foundation and consistency of practice across Children's Social Care, Early Years and Family Support.

Welsh Government grant funding was utilised to deliver preparatory training in both services to Adults and Children in Liberty Protection Safeguards awareness, assessing mental capacity, best interests, and preparing for the Court of Protection, and court skills.

There is a tiered approach to raising awareness around the impact of trauma when working with children and young people

Bridgend Education Governing bodies continues to be a theme that schools highlight as an area to develop. Last year, schools highlighted that safeguarding training for governors was a gap and needed to be addressed. In response, the local authority has offered additional governor training sessions and attendance has improved. Feedback from these sessions by governors has been that it is easier for them to access and attend virtual sessions.

An increasing number of Chair of Governors have requested attendance at the 1-day DSL training as per the recommendation in 'Keeping Learners Safe'. This is a direct result of the audit process and many schools rating themselves as red or amber in Section 4, 'Has the DSP and relevant Governor/s had recent safeguarding training which is relevant to their role?'

National Training Framework on Violence Against Women, Domestic Abuse and Sexual Violence (VAWDASV)

The table below outlines Cwm Taf Morgannwg's progress regarding the VAWDASV National Training Framework in 2022-2023.

Group	Numbers completed
1 Elearning	2184
2 Ask and act	638
3 Ask and act champions	33
4 Specialist provider training	64
5 Specialist managers	2
6 Senior leaders	0

Welsh Government Training Grant

The Board receives an annual grant from the Welsh Government to support additional safeguarding training activities. This year the grant enabled us to support additional training arising from the recommendations of our Practice Reviews. This involved over 300 members of staff across all partner agencies and included:

- Conference and Core groups
- Professional Curiosity
- A series of Coercive Control workshops
- Working with Hostile, Uncooperative or Resistant Families
- Workind with Disguised or Non-Effective Compliance
- Hidden Men – Working with Men in Child Protection

Multi Agency Practitioner Events (MAPF)

A Practitioner Event was held during Safeguarding Week in November 2022. The event took place at the University of South Wales' Conference Centre at the Nantgarw Campus. The event was on the theme of exploitation, with the morning session focussing on types of exploitation which affect children and young people and the afternoon session looking at the types of exploitation that adults may be at risk of.



Other Safeguarding Training

Two online Cwm Taf Morgannwg Safeguarding Board induction training sessions took place in January and February 2023, with 33 people attending.

The sessions were aimed at people whose work involved the Safeguarding Board, as well as those wishing to know more about the purpose and structure of the Board.

Safeguarding training at HMP & YOI Parc encourages all staff and volunteers to not only consider the safeguarding of our service users whilst in prison but the safeguarding of service users' families, for example when family / members of the community are visiting their loved ones. In doing this there has been an increase in staff reporting and information that is shared with the MASH.

Dissemination of Information

As part of developing a positive culture of learning, the Board uses a range of methods to disseminate best practice and learning within the workforce, including Multi-Agency

Practitioner Forums, information within the Board's e-bulletin, Safeguarding Updates, use of Twitter, Facebook and the Safeguarding Board's website.

Some of the information shared includes reports and learning outcomes from Adult/Child Practice Reviews and audits.

Two bulletins were produced in 2022-2023 and circulated amongst the Board and its partners and placed on the Board's communications platforms, as listed above.

The Spring 2022 e-bulletins can be accessed by selecting this [link](#).

An e-bulletin was also produced on the Welsh Government's National Action Plan on Preventing and Tackling Child Sexual Abuse. The bulletin contains a number of resources aimed at children and young people, parents and carers and professionals on child sexual abuse, exploitation and harmful sexual behaviour.

Select this [link](#) to access the bulletin.

Safeguarding Updates

A section has been created on the Safeguarding Board's website called '[Safeguarding Updates](#)' and the information on this webpage is used to generate e-mails to the Board and partners, with encouragement for these updates to be shared widely. Such information includes:

- Recently published policies and protocols
- Recently published practice review reports
- Safeguarding campaigns
- New legislation
- Consultations

7. How have we collaborated with others?

Working in partnership with others is integral to the work of the Board. We do this in a number of ways, with individuals, agencies, partnerships and organisations both within and external to Cwm Taf Morgannwg. Regional partnership working across Cwm Taf Morgannwg has remained strong, whether it involves planning workforce needs and training requirements, safeguarding, integrating service provision or responding to region-wide challenges. The need for this became even more evident during the COVID 19 pandemic to ensure that agencies worked effectively together to meet the needs of our communities.

Public Service Board

The Public Services Board (PSB) acts as the principal strategic leadership forum for the planning, commissioning, and delivery of public services across organisational boundaries to achieve better outcomes for people. Members of the Safeguarding Board sit on the PSB to seek to understand the major issues faced by each partner organization in the region.

Community Safety Partnerships

The Board works closely with the Community Safety Partnerships on common areas of interest, such as domestic violence, substance misuse, anti-social behaviour and domestic homicide reviews.

Together for Mental Health Partnership

Close working between the Board and the Together for Mental Health Partnership continues to address suicide and self harm prevention.

Wales Safeguarding Procedures Project Board

Members of the Board participate in the Wales Safeguarding Procedures (WSP) Project Board to ensure that the WSP for children and adults, along with the accompanying practice guides, remain fit for purpose and are adopted appropriately.

Welsh Government

The Board works closely with the Safeguarding and Advocacy Division of the Welsh Government on matters including Adult and Child Practice Reviews, safeguarding-related legislation and policies and as part of wider networks across Wales. This includes other Welsh Safeguarding Boards.

We also work closely with the Welsh Government's Regional Suicide and Self Harm Prevention Co-ordinator, who sits on the Board's suicide prevention groups and has worked alongside partner agencies to develop our strategic response.

National Independent Safeguarding Board (NISB)

A member of the NISB attends each Board meeting and provides advice and guidance in relation to safeguarding from a national, independent perspective.

Social Care Wales

The Board has contributed to the development of the National Training Framework, led by Social Care Wales and launched during Safeguarding Week 2022.

Advocacy Providers

Advocacy providers sit on the Board's Adult Quality Assurance and Performance Sub Group to ensure that the voices of adults at risk are heard.

Third Sector

We continue to seek opportunities to work with the third sector to improve safeguarding approaches in the region. This has been particularly evident in our work to tackle suicides, through a third sector engagement group.

Department of Work and Pensions

This year we have engaged with the DWP to enhance our approaches to suicide prevention, with DWP officers attending the suicide prevention groups and feeding into our strategic response.

8. Participation and Involving

Children, young people or adults who are affected by the exercise of the Safeguarding Board's functions should be given the opportunity to participate in the work of the Board.

The information below highlights some of the work that has been carried out during 2022-2023.

Exploitation

The Safeguarding Board's Communications and Engagement Officer and partners of the Board met with Merthyr Tydfil Youth Forum to discuss exploitation and to find out their views on exploitation, in order to help to inform the regional Exploitation Strategy which is being developed.



The Board's Communications and Engagement Officer met with a group of young people at Interlink to speak about Cwm Taf Morgannwg Safeguarding Board and also exploitation.



Colleagues from RCTCBC's Children Services and Community Safety Department met with pupils from Pontypridd High School to discuss exploitation and feeling/keeping safe. The group of young girls produced a presentation which they delivered during Safeguarding Week at the practitioners' event on 'Safeguarding Children and Young People from Exploitation'.

Other Engagement

Members of the Cwm Taf Morgannwg Safeguarding Board attended community engagement events, referred to as 'Hackathons' which were arranged by the Regional Partnership Board.

Cwm Taf Youth Offending Service

Through their 'Right Hook' project, Cwm Taf Youth Offending Service has been raising awareness and educating young people in their service on:

- Exploitation, safety and wellbeing
- Reducing violence, offending and anti-social behaviour
- Substance misuse

- In addition to engaging with the young people, staff have also been engaging with the family and carers before and after sessions.

This Project has created a safe space for young people to feel comfortable to engage in constructive activities, which has led to improved self-confidence and self-esteem, as well as providing opportunities for the young people to speak with YOS staff about any issues they may want to discuss. This has helped to break down barriers to engagement.

Bridgend College

Bridgend College arranged for three Forum Theatre sessions to be delivered for students on the child sexual and criminal exploitation.

RCT Children's Services

RCTCBC's Children's Services Participation Officer has been working with Voices from Care to carry out a number of events for care experienced young people to seek their views on various issues.

Some positives comments that were given by the young people are that they felt they had secure placements with trusting adults and carers.

The things they thought that could be improved, include:

- More wellbeing activities
- Anti-bullying advice
- CLA issue-based training for teachers and support staff.

The Participation Officer has liaised with the CLA Education Team Head Teacher and Voices from Care regarding these comments, to see what can be done to address them.

Action Research Project for Safeguarding Older People from Suicide in Cwm Taf Morgannwg

Work is continuing on this project, with the aim to capture and analyse the voices of older people across the region, with the focus being on older people with suicidal thoughts.

It is hoped that one of the outcomes of this project is to be able to understand that risk factors that contribute to people attempting suicide and to identify gaps in services and support. In addition, the project will try to interview family members who are either in a caring role or who have been or are affected by suicide in some capacity.

Case Study - Child Protection Conference – Parental Advocacy Pilot

With the support of grant funding from Welsh Government, MTCBC Children's Services commissioned a pilot of parental advocacy. This included an issue based parental advocacy offer along with a standard offer of parental advocacy for all parents attending Child Protection Conferences.

The initial pilot phase considered a control group which did not access parental advocacy and a cohort that access parental advocacy and analysed their experiences of attending a Child Protection Conference. The methodology of evaluation included:

- Consultation with all stakeholders
- Analysis of conference minutes from conferences involving parents who were offered an advocate and those who were not, in the same timeframe.

Feedback and analysis of conference minutes in this small scale project overwhelmingly indicated that having a parent advocate has enabled parents to engage with the conference process better and to feel more confident in sharing their views, wishes and feelings. Their understanding of the process also appears to have improved as a result.

Based on the positive feedback funding was identified for a 12 month project of parental advocacy where there is a standard offer of parental advocacy for all parents and person with parental responsibility for initial and Review Child Protection Conferences.

Social Media

Throughout the year, information on a range of safeguarding issues for both the public and professionals was shared on the Board's Facebook page and its Twitter account, and posts from other organisations were also shared and retweeted, providing information and signposting to various support services.

The Safeguarding Board supported a number of awareness days, including:

- Sexual Abuse and Sexual Violence Awareness Week
- White Ribbon Day
- World Mental Health Day
- World Suicide Prevention Day

Safeguarding Week

Safeguarding Week took place from 14th until 18th November and the theme for Cwm Taf Morgannwg was exploitation.

A multi-agency task group was set up to plan for the week and a programme of events was developed, which included events on training on various forms of exploitation affecting children, young people and adults in our communities.

The programme can be viewed by selecting this [link](#).

One of the key events that took place was the 'Safeguarding Children, Young People and Adults from Exploitation' event that was aimed at practitioner and took place face-to-face at the University of South Wales' Conference Centre in Treforest. There were a numbers of speakers delivering presentations on a range of topics relating to exploitation. The event was well attended and the presentations were well received.

9. Contributions of Board Members

Each Safeguarding Board partner has a responsibility to ensure that the Board is operating effectively. There are clearly defined Terms of Reference as well as role profiles for Board members.

The Board continues to review the effectiveness of measures taken by partners and other bodies in relation to safeguarding via quality assurance, audits, and performance management. All the required statutory partner agencies in Cwm Taf Morgannwg are represented on the Board, Operational Committees, and Sub Groups, and attendance is monitored at these meetings.

Attendance at the Board and Joint Operational Committee meetings is presented in the table below:



AGENCY	ATTENDANCE AT BOARD (6 meetings)	ATTENDANCE AT OPERATIONAL COMMITTEE (4 meetings)
Director (RCT)	6	Not applicable
Director (MT)	6	
Director (BCBC)	6	
RCT Children Services	6	4
RCT Adult Services	6	4
RCT Public Protection	2	0
RCT Education	4	3
MT Children Services	6	4
MT Adult Services	5	2
MT Public Protection	1	0
MT Education	4	1
Bridgend Children Services	6	3
Bridgend Adult Services	6	3
Bridgend Public Protection	2	1
Bridgend Education	3	2
Cwm Taf Morgannwg University Health Board	6	3
South Wales Police	6	4
National Probation Service	5	4
Parc Prison	4	N/A

Partner agencies also provide the Board with an annual report demonstrating their contribution and commitment to safeguarding. This is summarised below.

Merthyr Tydfil County Borough Council (MTCBC)

Representatives from MTCBC are actively involved in all meetings and Sub Groups of the Board, including the chairing of the Board, Executive Board, Strategic Suicide Group and the Protocols and Procedures Sub Group. Statistics indicate that MTCBC contributes by Chairing and participating in Board and subgroup/task and finish group meetings above the expected percentage. Attendance at all groups can be challenging given that there is only a small number of people in the MTCBC structure of a sufficient level to contribute to the work of the Board. This has been included in the Local Authority's Corporate Risk Register.

The Education Department within Merthyr Tydfil has attended Board and relevant subgroup meetings throughout the year and contributed when required. Recruitment into key posts within the tail end of the financial year has provided a greater scope for further contribution and participation with consistent personnel moving forward.

Bridgend County Borough Council (BCBC)

Representatives from BCBC are actively involved in all meetings and Sub Groups of the Board. The Director acts as the vice chair of the Board and chairs the Exploitation Steering Group. Representatives have attended workshops, planning days and team meetings which have contributed to the setting of actions to meet the boards priorities for its annual plan.

BCBC has also contributed fully to participating in Child and Adult practice reviews, learning events and provided Panel members and Chairs where required. There was a robust contribution to the significant child practice review in relation to Child T, assisting an extremely challenging and difficult review but ensuring information was shared to support any areas of good practice and those for future learning

Rhondda Cynon Taf County Borough Council (RCTCBC)

RCT Adult Services have representation on all of the Board's sub-groups and have an excellent track record in attendance. The Director chairs the Joint Operational Committee. The Service Manager for Safeguarding chairs the Adult Safeguarding Quality Assurance & Performance sub-group and the RCT Self-Neglect Panel and vice-chairs the Engagement, Participation & Communication sub-group. Adult Services have had a Panel member on all relevant Adult Practice, Domestic Homicide and Mental Health Homicide Reviews. The Service Manager has also acted as Chair on one Adult Practice Review and has been a Reviewer for one recently completed Child Practice Review.

RCT Children Services continues to provide a high level of contribution to the work of the Board through regular attendance at and participation in the work of all of the Subgroups to the Board. In 2022-2023 RCTCBC has chaired the Children Quality Assurance Panel and vice chaired the Multi Agency Child Exploitation (MACE) sub-group alongside undertaking the lead role in the development of the Exploitation Strategy. Children Services have also contributed to Immediate Response Groups and Adult and Child Practice Reviews in the roles of Chair and/or Reviewer.

South Wales Police

South Wales Police have provided panel members for all CPRs, APRs and DHRs undertaken in Cwm Taf Morgannwg in 2022-2023. In addition, South Wales Police have provided staff to act as the Reviewer and Chair in several reviews. A member of the police staff acts as vice-chair of the Joint Review Group, vice-chair of the Suicide Review Group and chairs the Multi Agency Child Exploitation (MACE) sub-group, alongside supporting the development of the Exploitation Strategy.

Her Majesty's Prison and Young Offenders Institute Parc

Prison staff attend the Cwm Taf Morgannwg Safeguarding Board meetings, as well as other Sub Group meetings. The Adult Safeguarding Lead undertook the Child Practice Review training in November 2022 and the Offensive Weapon Review training.

Cwm Taf Morgannwg University Health Board (CTMUHB)

CTMUHB are active participants in all of the Board and sub group work. Both the Head and Deputy have undertaken chairing arrangements for the MASH QA and Suicide Review Group. Health attended and contributed to the CTMSB Development Day and subsequent Annual Plan. Representatives from Health take on the role of Chairs, reviewers and consistent panel members for Reviews. The Health Board were very active in this year's Safeguarding Week, promoting training and resources on a variety of safeguarding issues affecting both children and adults

WAST

During 2022-2023, WAST Safeguarding Team contributed 3 Adult Practice Reviews, 1 Child Practice Review and 7 PRUDICs. WAST was also involved in information sharing for 19 Section 126 Adult at Risk Strategy discussions. Representatives attended the Joint Review Group, Policies & Procedures Group and the Cwm Taf Morgannwg Regional Safeguarding Board

10. Managing our Resources

The Cwm Taf Morgannwg Safeguarding Board uses the funding formula set out in the Social Services and Wellbeing (Wales) Act 2016 statutory guidance. This allows us to assess and identify annual financial contributions from statutory partner agencies.

This is calculated as follows:

Agency	% Split	% Split
Rhondda-Cynon-Taf CBC	60%	55%
Bridgend CBC		32%

Merthyr Tydfil CBC		13%
Cwm Taf Morgannwg UHB		25%
South Wales Police		10%
Probation Service		5%
Totals		100%

In 2022-2023 expenditure was as follows:

Staff	£355,955
Premises	£8,890
Other	£51,400
WG Grant Income (SUSR)	-£10,500
Total	£405,745

Training costs are not included as this sits outside the Board budget.

11. Other Board Activities

Adult Protection and Support Orders (APSOs)

Adult Protection and Support Orders have been available since the 2016 implementation of the Social Services and Well-Being (Wales) Act 2014 but have been used rarely. There were no APSO applications APSOs in 2022-2023.

Guidance and Advice received from the Welsh Ministers and/or the National Board

The Board continues to work closely with Welsh Government and the National Board and responds promptly to requests for information. A good relationship has been established with the NISB member for the region, and support has been provided on a number of occasions when seeking to commission independent reviewers or to influence national processes and guidance.

Section 137 requests for information

Section 137(1) of the Act provides a Safeguarding Board with the power to request



specified information from a qualifying person or body provided that the purpose of the request is to enable or assist the Board to perform its functions under the Act.

In 2022-2023 the Board did not use its Section 137 powers to access information.

Are You Concerned About Someone?

If you suspect that a **child or young person** is being harmed or is at risk of being harmed then you have a duty to report it immediately. All calls concerning worries about children are treated seriously. Contact your local Safeguarding Team on the numbers provided below:

In Rhondda Cynon Taf: 01443 425006
In Merthyr Tydfil: 01685 725000
In Bridgend: 01656 642320

Opening Hours:

Monday - Thursday 8.30am - 5.00pm
Friday - 8.30am - 4.30pm

If you suspect that an **adult** is being harmed or is at risk of being harmed then you have a duty to report it immediately. All calls concerning worries about vulnerable adults at risk are treated seriously. Contact your local Safeguarding Team on the numbers provided below:

In Rhondda Cynon Taf: 01443 425003
In Merthyr Tydfil: 01685 725000
In Bridgend: 01656 642477

Opening Hours:

Monday - Thursday 8.30am - 5.00pm
Friday - 8.30am - 4.30pm

To contact Children or Adults Services outside office hours, at weekends and bank holidays, call:

Cwm Taf Morgannwg Emergency Duty Team on **01443 743665**.

If you suspect that a child, young person or an adult is at immediate risk of harm call 999 and speak to the Police.

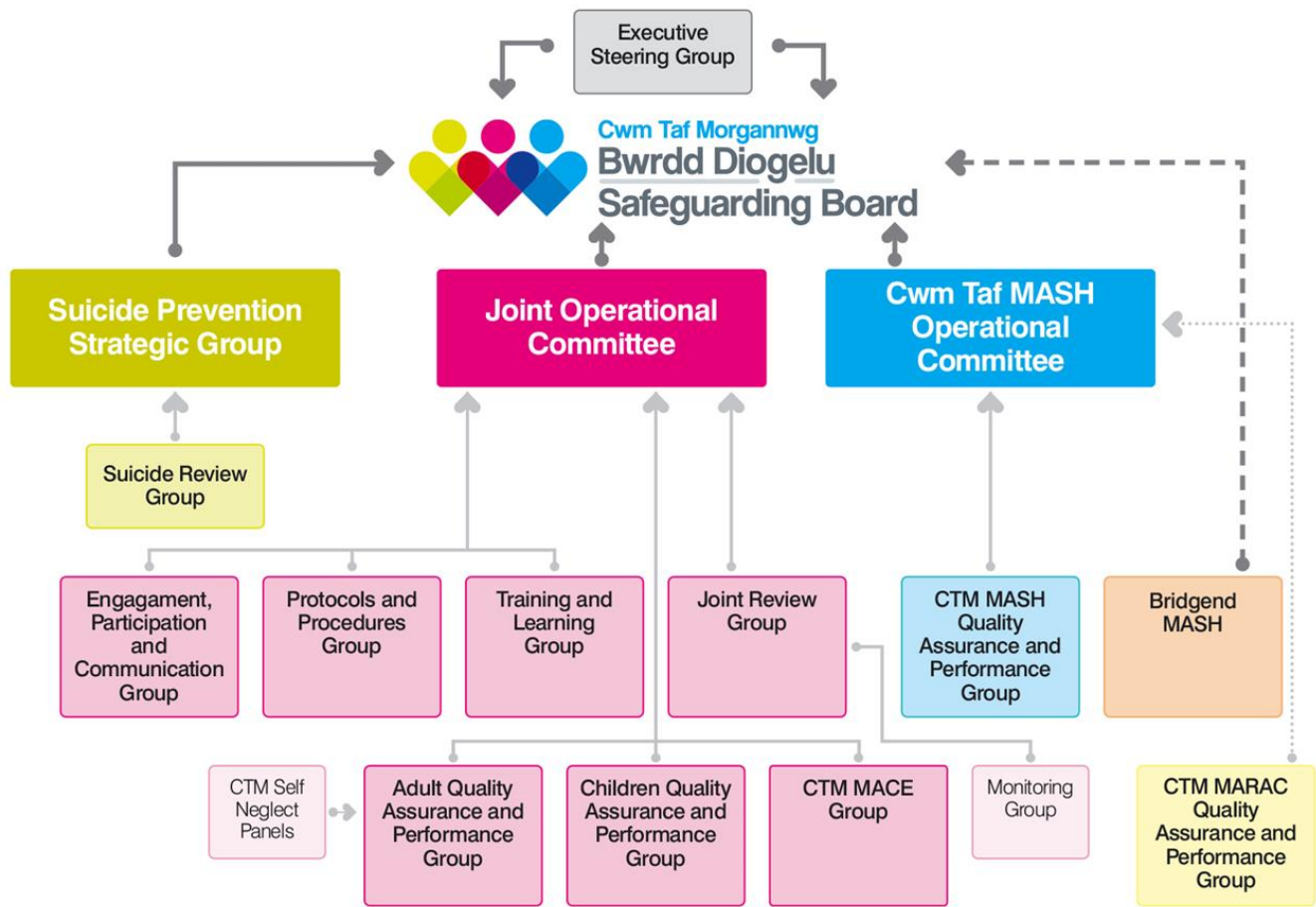
If you would like to report a non-urgent incident, or have a problem or general query, you can call 101, the 24 hour non-emergency number for the police. **Use 101 when the incident is less urgent than 999.**

APPENDIX 1 - BOARD MEMBERSHIP

TITLE	AGENCY
Director of Social Services (Chair)	Merthyr Tydfil County Borough Council
Director of Social Services and Wellbeing (Vice Chair)	Bridgend County Borough Council
Director of Social Services (Chair of the Joint Operational Committee)	Rhondda Cynon Taf County Borough Council
Adult Safeguarding Service Manager	Rhondda Cynon Taf County Borough Council
Director, Public Health	Rhondda Cynon Taf County Borough Council
Head of Partnerships (Children)	Rhondda Cynon Taf County Borough Council
Director of Education and Inclusion Services	Rhondda Cynon Taf County Borough Council
Service Director, Children Services	Rhondda Cynon Taf County Borough Council
Head of Legal - Community Care and Children	Rhondda Cynon Taf County Borough Council
Prison Director	Parc Prison
Head of Safeguarding	Cwm Taf Morgannwg University Health Board
Named Doctor	Cwm Taf Morgannwg University Health Board
Deputy Executive Nurse Director	Cwm Taf Morgannwg University Health Board
Head of Service	Cwm Taf Youth Offending Service
Head of Service	Youth Justice Service, Bridgend
Named Lead for Safeguarding	Public Health Wales
Designated Nurse (National Safeguarding Team)	Public Health Wales
Head of Probation	Probation Service
Director of Education	Merthyr Tydfil County Borough Council
Head of Public Protection	Merthyr Tydfil County Borough Council
Head of Adult Services	Merthyr Tydfil County Borough Council

Principal Safeguarding Manager	Merthyr Tydfil County Borough Council
Head of Children Services	Merthyr Tydfil County Borough Council
Head of Adult Social Care	Bridgend County Borough Council
Head of Children's Social Care	Bridgend County Borough Council
Head of Education and Family Services	Bridgend County Borough Council
Group Manager	Bridgend County Borough Council
Head of Public Protection	Bridgend County Borough Council
Head of Adult Safeguarding and Secure Estate	Bridgend County Borough Council
Superintendent	South Wales Police
Head of Protecting Vulnerable Persons	South Wales Police
Assistant Director Quality, Safety & Patient Experience	Welsh Ambulance Service Trust
NISB Member	National Independent Safeguarding Board
Safeguarding Lead Officer	South Wales Fire & Rescue Service

APPENDIX 2 – BOARD STRUCTURE



Glossary of Terms

Adult Practice Review (APR)

The Regional Safeguarding Board must commission an Adult Practice Review in cases where an adult at risk has died, sustained potentially life threatening injury or sustained serious and permanent impairment of health.

Child Practice Review (CPR)

The Regional Safeguarding Board must commission a Child Practice Review in cases where a child has died, sustained potentially life threatening injury or sustained serious and permanent impairment of health.

Child Sexual Exploitation (CSE)

Child sexual exploitation (CSE) is a type of sexual abuse. Children in exploitative situations and relationships receive something such as gifts, money or affection as a result of performing sexual activities or others performing sexual activities on them.

Children Looked After (CLA)

A child is looked after by a local authority if a court has granted a care order to place a child in care, or a council's children's services department has cared for the child for more than 24 hours.

Community Safety Partnership (CSP)

Statutory partnership to develop and implement strategies to tackle crime and disorder including anti-social and other behaviour adversely affecting the local environment.

Domestic Homicide Review (DHR)

A Domestic Homicide Review (DHR) is a locally conducted multi-agency review of the circumstances in which the death of a person aged 16 or over has, or appears to have, resulted from violence, abuse or neglect by: a person to whom he or she was related, or with whom he or she was or had been in an intimate personal relationship; or, a member of the same household as himself or herself.

Exploitation

Exploitation is a type of abuse. Exploitation involves being groomed, forced or coerced into doing something that you don't want to do for someone else's gain.

Immediate Response Groups (IRG)

A group which is convened to provide a rapid, multi-agency response to managing the consequences of a critical incidents, such as the unexpected death of an adult and is led by the Police Superintendent (or a suitable deputy).

MARAC (Multi Agency Risk Assessment)

A weekly risk management meeting where professionals share information on high risk cases of domestic violence and abuse and put in place a risk management plan.

Modern Slavery

The illegal exploitation of people for personal or commercial gain. It covers a wide range of abuse and exploitation including sexual exploitation, domestic servitude, forced labour, criminal exploitation and organ harvesting.

Multi-Agency Practitioner Forum (MAPF)

Multi-agency professional forums are a mechanism for producing organisational learning, improving the quality of work with families and strengthening the ability of services to keep children safe. They utilise case information, findings from child protection audits, inspections and reviews to develop and disseminate learning to improve local knowledge and practice and to inform the Board's future audit and training priorities.

Public Protection Notice (PPN)

The forms have two main purposes. One is for police officers to make referrals to partner agencies when they have concerns about vulnerable people. The PPN is also used as a risk assessment tool for victims of domestic abuse and stalking and harassment (DASH).

PRUDIC (Procedural Response to Unexplained Deaths in Infants and Children)

This procedure sets a minimum standard for a response to unexpected deaths in infancy and childhood. It describes the process of communication, collaborative action and

information sharing following the unexpected death of a child.

Quality Assurance and Performance Groups

Two separate groups for adults and children whose objectives are to monitor the effectiveness of agencies' practice within the processes of safeguarding and encourage high standards of practice by all those involved in safeguarding work, promoting agency and individual accountability through the monitoring and evaluation of performance.

Self Neglect

Self-neglect is a general term used to describe a vulnerable adult living in a way that puts his or her health, safety, or well-being at risk.

Social Services and Wellbeing (Wales) Act 2014

The Social Services and Well-being (Wales) Act is the law for improving the well-being of people who need care and support, and carers who need support.

Strategy Discussion/Meeting

A meeting for social workers and other professionals to plan what they are going to do next about a case.

Violence Against Women, Domestic Abuse and Sexual Violence (VAWDASV)

The Violence against Women, Domestic Abuse & Sexual Violence (Wales) Act 2015 focusses on the prevention of these issues, the protection of victims and support for those affected by such issues.